



# EXECUTIVE SUMMARY

## Kerbside Waste Audit 2024 – Macedon Ranges Shire Council

### BACKGROUND

Macedon Ranges Shire Council (MRSC) has recently launched a Shire-wide soft plastic recycling pilot program. Residents and businesses using the Council’s kerbside collection service can now recycle soft plastics using Council-supplied orange bags placed in their yellow-lid recycling bins.

Prior to this Shire-wide roll-out, Sustainable Solutions Now conducted an independent waste audit for MRSC, analysing a total of 4 tonnes and 50,000 litres of incoming organics, recycling, and landfill materials, providing a baseline for future comparisons to measure the pilot’s effectiveness.

### SCOPE & OBJECTIVES

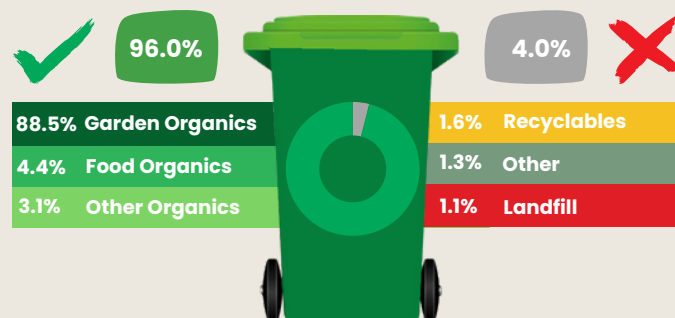
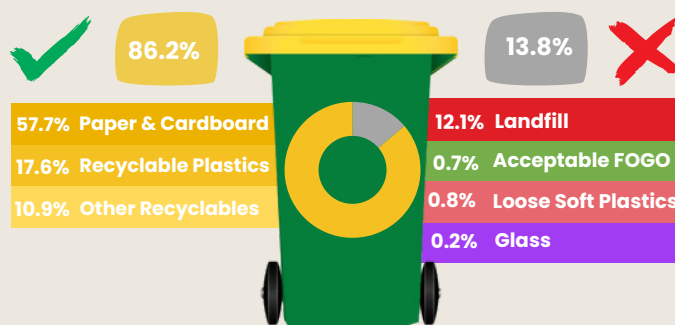
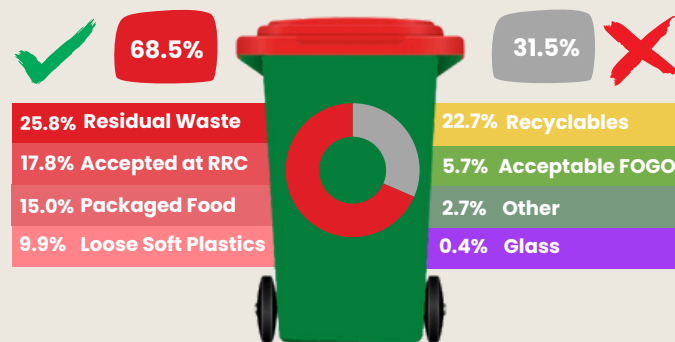
The audit was conducted on 125 properties for each stream (total of 375 bins) randomly selected from regional towns and areas within Macedon Ranges Shire Council.

The primary objective of this audit was to evaluate the composition, weights, and volumes of various the streams, with a focus on:

- Resource recovery contents, including organics and recyclables in the garbage bin, and the potential for soft plastics recovery.
- Contamination levels and the presence of glass in recycling bins.
- Contamination presence in FOGO bins.

### RESULTS

The figures below present a summary of content for each bin by volume. The left side shows the acceptable volume percentage for each bin, and the right side displays the contamination percentage by volume.





## Landfill Stream

A total of 1,492 kg and 13,761 litres of landfill bin content was audited. 82.8% of the content is deemed acceptable landfill waste by weight, or 68.5% by volume. This includes packaged food waste which is not accepted in the organics bin. 26% by weight and 15% by volume is packaged food waste with possibility to get source separated into the organics bin if de-packaged. The landfill bin also contains over 7% of recyclables by weight and just over 22% by volume. Acceptable organics content is currently at 6.8% by weight and 5.7% by volume. Finally, the non-acceptable kerbside waste, which includes hazardous, occupies around 2.2% of the landfill bin by weight and 2.7% by volume.



## Recycling Stream

A total of 770 kg and 20,091 litres of recycling bin content was audited. 75% of the content is deemed acceptable recycling by weight, or almost 87% by volume. Cardboard is the main material present, with just over 48% by weight and 58% by volume. Landfill material sits at around 21.9% by weight and 12.2% by volume. Glass takes up 1.32% of the total weight and non-kerbside acceptable material takes up 0.15% by weight.



## Organics Stream

A total of 1,741 kg and 15,796 litres of FOGO bin content was audited. 96% of the content is deemed acceptable by volume, or 97.5% by weight. 1.7% of the content was landfill waste by weight, or 1.4% by volume. Recyclables accounted for 0.5% by weight and 1.6% by volume. The 0.3% non-acceptable kerbside waste by weight accounts for branches above 250mm in diameter, and e-waste.

## Glass, Soft Plastics, CDS containers and Textiles

Glass, including CDS containers and non-CDS containers, accounted for <1% by weight and 0.4% by volume in the landfill bin. In the recycling bin, approximately 1.3% by weight and 0.2% by volume was glass. No glass was found in the FOGO bin.

A small number of orange soft plastics bags were found, totaling 1.25kg and 60 litres. All bags belonged to Romsey; the only suburb that had the soft plastics roll-out implemented at the time of the audit. No major contamination was detected inside the bags. The landfill bin had 6.6% of loose soft plastics by weight and 9.9% by volume. The recycling bin had 0.16% of loose soft plastics by weight and 0.8% by volume. The FOGO bin had 0.01% of loose soft plastics by weight and 0.04% by volume.

In total, including eligible CDS glass, approximately 400 eligible CDS containers per week are disposed of into the kerbside bins; 306 in the recycling bins and 94 in the landfill bins.

Textiles accounted for 6.1% of the landfill weight and 9.5% of the volume. A small number of textiles were found in the recycling bin: 1.3% by weight and 0.5% by volume.

