

A photograph of a white house with a red roof and a large tree, with a group of geese in the foreground. The house has a porch and a window with a red frame. A chain-link fence is in front of the house. The geese are of various colors, including white, grey, and green. The scene is set in a grassy area with a large tree on the left and a smaller tree on the right. The sky is blue with some clouds. The text is overlaid on the top half of the image.

Cool Changes: Riddells Creek Community Climate Action Plan

Acknowledgment of Country

We acknowledge the Traditional Owners of this land, the Wurundjeri Woi-Wurrung, as the caretakers and custodians of the lands now known as the Riddells Creek.

The Wurundjeri Woi-Wurrung continue to practice their culture and customs and experience a close spiritual, physical, social, historical and economic relationship with the land and waters that make up their country.

They have lived in the country for thousands of years before the arrival of Europeans in a way that was sustainable and which preserved the wildlife, habitat, land and waterways of this country.

Council context

Cool Changes is a Macedon Ranges Shire Council (MSRC) program that works with local communities across the shire to facilitate the development of local climate change action plans.

Cool Changes commenced in 2019 with a pilot project: Sustainable Malmsbury and has since gone on to help create community-led, place-based climate action plans in Woodend and Romsey & Lancefield.

Understanding the vital role communities play in helping everyone adapt and mitigate climate change, the actions identified throughout the program will be used to influence the upcoming shire-wide Climate Emergency Response Plan.

Date published: TBC

This Plan was created in partnership with the Riddells Creek community and:



Contents

Our Plan

How the Plan was developed	4
Graphic recordings of workshops	5
How to get involved	7
How the Plan will be implemented	7

Our approach

Forming our foundation	8
Overarching principal.....	8
Action plan themes	9

Our actions

Cheat’s Guide to Retrofitting.....	10
Lobby for local change.....	10
Free Range Kids.....	10
Swampy Business.....	11

Education & awareness campaign.....	11
Rooftop solar bulk buy.....	11
Large local solar array.....	12
Community bus.....	12
Provide car sharing options.....	12
A Walking School Bus.....	12

Appendix 1: Context

Appendix 2: Future actions

Our Plan

Riddells Creek has had a long history of local climate action, from Greening of Riddell forming in 1990 to Landcare arriving in 2005, this community has, and continues, to have dedicated, inspiring and impactful volunteers.

This plan aims to create a collective vision for climate action into the future and provide new, passionate residents a document in which to refer to when eager to continue this care and connection to Riddells Creek.

Understanding the connectedness between local climate action and community resilience, participants identified vulnerabilities and assets in a changing climate used these to help frame future action.

Macedon Ranges Shire Council is happy to be partnering with the Riddells Creek Neighbourhood House by co-designing workshop methodology and outputs.

This community climate action plan will also play into something much bigger for the town of Riddells Creek with the Neighbourhood House also working towards creating a town-wide Resilience Plan. This plan will aim to identify key priorities and actions to enable Riddells Creek be able to thrive in the face of future challenges.

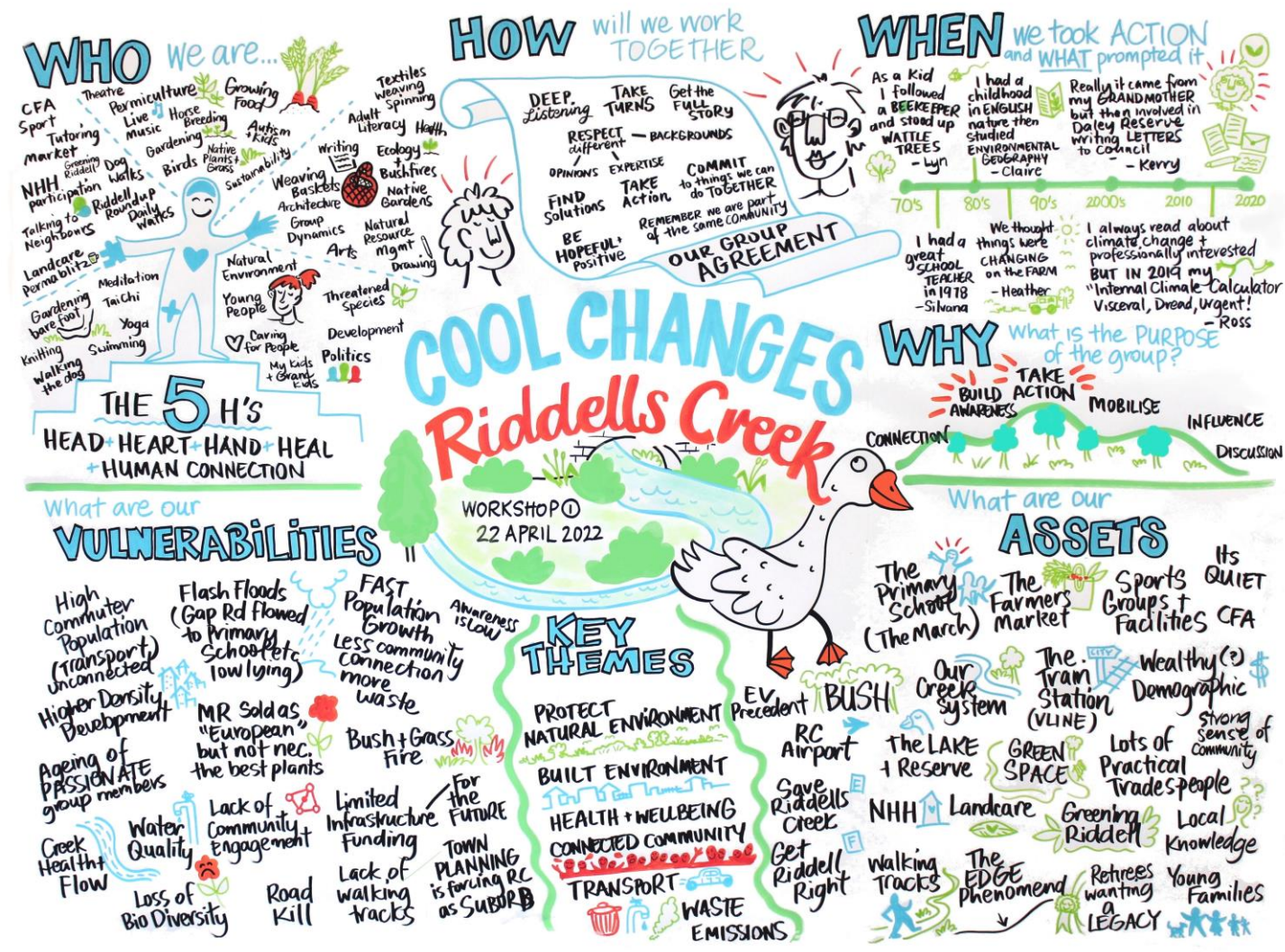
How the plan was developed

The following plan was developed using multiple engagement and collaboration methods. Starting with a meeting with local experts and community groups to establish the hard work that has come before this plan, followed by a town-wide survey, and then three sequential workshops.

Throughout these three workshops, community members explored aspects of community resilience, localised impacts of climate change and local actions that addressed both impacts and township vulnerabilities. These workshops continued to inspire and ignite passion amongst everyone involved.

An initial list of 64 actions were identified by the community as possible local climate actions that could happen within Riddells Creek. From this initial list, participants then collated a list of 10 priority actions (see full list of actions in Appendix 2). The following pages show a graphic recording of each workshop, created by the very talented Riddells Creek local, Nellie Pearce.





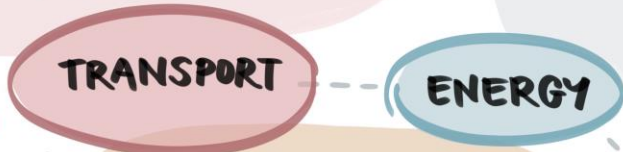
Artist interpretation of workshop 1

GRAPHIC RECORDING BY Nellie Pierce

Artist interpretation of workshop 2

CAPTURED BY NELLIE PIERCE 2022

REDUCE EMISSIONS + STRENGTHEN COMMUNITY CONNECTIONS + SUPPORT LOCAL ECONOMY



Our Action on CLIMATE CHANGE IN RIDDELLS CREEK

COMMUNITY BUS



- Like 'GoGet'
- Great as a second vehicle
- Can make income for the car owner
- Bus around town
- Riddell to Gisborne
- Start with a Survey

CAR SHARE

★ what about an ELECTRIC CAR?



WALKING SCHOOL BUS



- There used to be one here so we're keen to start it up again

ROOFTOP SOLAR BULK BUY

- Info session
- Currently 25% solar
- AIM: 50% +



LARGE LOCAL SOLAR ARRAY

- Some interest already
- Will need a Project Manager
- Ownership structure needs to be worked out eg. co-op?
- Cost ≈ \$700,000



SWAMPY BUSINESS

- Involve local community especially FAMILIES
- Revitalises Drains
- People + kids will witness the areas change + see their impact
- we have the expertise melb. water has \$\$



FREE RANGE KIDS

- Getting kids off screens and out into the wild



NATURAL ENVIRONMENT

BUILT ENVIRONMENT

CHEATS GUIDE TO RETROFITTING



- Series of information sessions
- Eg. encouraging solar + discouraging gas
- Ties in with ENERGY+WASTE



ENERGY

HEALTH + WELLBEING

EDUCATION + AWARENESS CAMPAIGN

- Simple fliers + info packs eg. for New Residents
- Could use recycled 'seed paper'
- Expand / link in with other themes + info campaigns.
- Resource wise workshops



WASTE

LOBBYING FOR LOCAL CHANGE

- Foodworks - Soft Plastic
- Public bins - Recycling



How to get involved

Community climate action can be performed by anyone! You don't need to be an expert, just some eagerness to participate and join the journey.

When developing the action we tried to assign action 'leaders' to help drive the action forward. If an action has a leader you are free to contact them directly. If an action doesn't have a leader and you're interested in learning more please also reach out. Knowledge can be taught, passion cannot!

Also remember that this Plan captures the community thinking at a point in time. Ideas, actions and goals will evolve over time. If you have other ideas for projects and the willingness to kick-start them, we encourage you to do so.

Together, we can continue to care for people and climate into the future!



How is this plan going to be implemented?

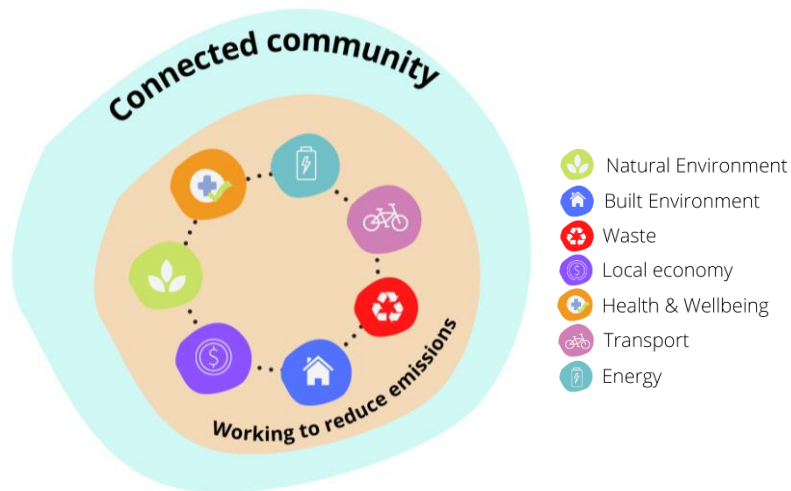
The exact method of implementing is yet to be confirmed. Once this Plan is reviewed for the Riddells Creek community, participants will come back together to discuss the best method of keeping this Plan on track. Options that have been put forward to the group are:

1. Decentralised model: No overarching coordination of the Plan. Essentially the delivery of the Plan will focus on each Lead managing their actions. People will continue to collaborate through information communication channels and quarterly meetings.
2. Riddells Creek Neighbourhood House to 'hold': RCNH to act as a 'community connector' and organise regular meetings to bring participants together and share progress.
3. Join the Macedon Ranges Sustainability Group (MRSG): Riddells Creek to join the MRSG as a locality-based action group, similar to Sustainable Malmsbury
4. New place-based environmental group: Create an entirely new group with a centralised 'steering' committee.
5. Re-instate discontinued group: Riddells Creek has had many previous environmental focused groups that could potentially be re-ignited. Eg, Riddells Creek Sustainability, Transitions Town Riddells Creek.

Our approach

Climate change is a complex and global issue and the Riddells Creek community clearly understand the urgency to act but in that urgency it was very important to stop and recognise the amazing hard work already being done within the community. Whilst exploring the local impacts of climate change and Riddells Creeks vulnerabilities, it was wonderful to also map to the many community assets that are already in place that can be used as a solid foundation for future actions.

From mapping both vulnerabilities and assets, certain themes started to appear and from these themes, our foundation and overarching principal came to the forefront.



Forming our foundation

“Connected community”

Riddells Creek is an amazing community! From sharing surplus home-grown food to conversations walking down Main Road it became clear quickly that people value and want to enhance the Riddells Creek Community.

Understanding that climate change will affect all of us, the group rightfully identified that at the foundation of all local climate action is a *connected community*.

This connected community will build resilience in the face of a changing climate and help bring everyone along on the journey that is tackling climate change.

Overarching principal

“Working to reduce emission”

Our working group also identified that actions should be aiming to address and reduce the root cause of climate change – greenhouse gas emissions.

Using this as an overarching principal when prioritising actions, this plan offers a clear and concise pathway for the community to both connect, address and mobilise against climate change.

Themes



Local Economy

Mobilising the local business community to embrace an innovative, sustainable and future-proofed local economy.



Health & Wellbeing

Supporting one another through a changing climate that promotes connectedness and build resilience.



Transport

Advocate for sustainable and active transport options within Riddells Creek and build connectivity to surrounding towns.



Energy

Activating the community in exploring alternative energy options to reduce greenhouse gas emissions.



Natural Environment

Connecting people to place by deepening knowledge and providing skills to protect and enhance biodiversity into the future.



Built Environment

Helping community to create sustainable homes whilst advocating for sustainable development.






Waste

Enabling the community to act wisely with resources and build knowledge of small scale circular economy's.

Our actions




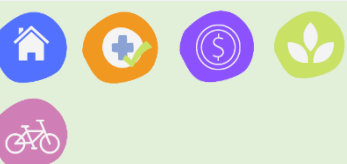
Riddells Creek Neighbourhood House is committed to helping the community implement this plan and, as such, is kindly donating ongoing meeting spaces, provisions and links to community broadcasting such as Riddell Round Up.

ACTION	RATIONALE	CO-BENEFITS	CONTACTS
<p>CHEAT'S GUIDE TO RETROFITTING WORKSHOPS ON CHEAP & EASY WAYS TO MAKE YOUR HOME MORE EFFICIENT</p>	<ul style="list-style-type: none"> - DECREASE DEPENDANCE ON ELECTRICITY - REDUCE HEAT STRESS - EDUCATE COMMUNITY ON HOME ENERGY EFFICIENCY - AIM FOR RENTERS/NEW RESIDENTS 		<ul style="list-style-type: none"> - JULIE MACDONALD (LEAD) - BOB McNAUGHT
<p>LOBBY FOR LOCAL CHANGE CREATING SOFT PLASTIC COLLECTION POINTS</p> <p>FEASIBILITY STUDY FOR 4 BIN WASTE SYSTEM IN PUBLIC SPACES</p>	<ul style="list-style-type: none"> - DECREASE WASTE GOING TO LANDFILL - ASSETS ALREADY IN PLACE - PRIMARY SCHOOL ALREADY ONBOARD 		<ul style="list-style-type: none"> - BRONWYN McLEOD - BEV MULKERIN - WES DEATH - RIDDELLS CREEK N'HOOD HOUSE
<p>FREE RANGE KIDS EDUCATIONAL PROGRAMS THAT PROVIDE OPPORTUNITIES FOR KIDS TO LEARN, CONNECT & EXPLORE THE NATURAL WORLD</p>	<ul style="list-style-type: none"> - ALLOWING KIDS TO RECONNECT WITH THEIR ANIMAL SENSORING OF A BODY IN PLACE. - USE BARRM BIRRM AS A NATURAL PLAYGROUND 		<ul style="list-style-type: none"> - ROSS COLLIVER (LEAD)



ACTION	RATIONALE	CO-BENEFITS	CONTACT
<p>SWAMPY BUSINESS REGENERATING THE DRAINAGE SYSTEM IN RIDDELLS CREEK</p>	<ul style="list-style-type: none"> - CONNECT COMMUNITY TO RIDDELLS CREEK ENVIRONMENT & EACH OTHER THROUGH REGENERATION OF GREEN SPACES. - ENHANCE LOCAL BIODIVERSITY - DRAWDOWN EMISSIONS 		<ul style="list-style-type: none"> - MAREE SCALE (LEAD) - MELINDA LAWRY - KATE PARKINS - LYN HOVEY
<p>EDUCATION & AWARENESS CAMPAIGN: INFORMATION SESSIONS ON ACTIONS INDIVIDUALS CAN TAKE TO ADDRESS CLIMATE CHNAGE</p>	<ul style="list-style-type: none"> - TO MOTIVATE PEOPLE TO <u>DO</u> AS A RESULT OF INCREASED AWARENESS. - HELPING COMMUNITY TO ADDRESS CLIMATE CHANGE WITH SIMPLE, EASY ACTIONS FOR ALL AGES - INFORMATION SESSION HELD ON WASTE, NATURE CONNECTION, CARING FOR COUNTRY, ETC. 		<ul style="list-style-type: none"> - KATE PARKINS (LEAD) - VINCE MULKERIN (LEAD) - ANNETTE DEATH
<p>ROOFTOP SOLAR BULK BUY: PROMOTE COMMUNITY ENERGY SCHEMES</p>	<ul style="list-style-type: none"> - REDUCE EMISSIONS - REDUCE INDIVIDUAL HOUSHOLD COSTS - MAKE RIDDELL A LEADING SOLAR TOWN 		<ul style="list-style-type: none"> - LYN HOVEY (LEAD) - CATHY MAPLESDEN - HEATHER McNAUGHT



ACTION	RATIONALE	CO-BENEFITS	CONTACT
LARGE LOCAL SOLAR ARRAY: COMMUNITY-OWNED RENEWABLE ENERGY	<ul style="list-style-type: none"> - DECREASE EMISSIONS - CONNECTS COMMUNITY - SUPPLIES LOCAL HOUSES, BUSINESS AND OTHER (SUPERMARKET) 		- LYN HOVEY
COMMUNITY BUS: FEASIBILITY STUDY FOR A LOCAL RIDDELLS CREEK BUS SERVICE	<ul style="list-style-type: none"> - CONNECT RIDDELLS CREEK TO SURROUNDING TOWNS - CONNECT YOUTH TO SCHOOL AND EMPLOYMENT OPTIONS - REDUCE RELIANCE ON CARS 		- GARY PLUMMER - RIDDELLS CREEK N'HOOD HOUSE
PROVIDING CAR SHARING OPTIONS: PROMOTE CAR SHARING WITHIN RIDDELLS CREEK (EG. GOGET/CAR NEXT DOOR)	<ul style="list-style-type: none"> - PROVIDING CAR SHARE OPTIONS DECREASES AMOUNT OF CARS NEEDED PER HOUSEHOLD - DECREASES EMISSIONS FROM CARS - BRINGS INCOME INTO LOCAL ECONOMY 		- AGA JONES
A WALKING SCHOOL BUS INCREASE SAFE, ACTIVE TRANSPORT OPTIONS FOR YOUNG KIDS AND FAMILIES	<ul style="list-style-type: none"> - REDUCES EMISSIONS - PROMOTES HEALTHY LIVING - CONNECTS COMMUNITY 		- AGA JONES - JUDE ELLIS - RIDDELLS CREEK N'HOOD HOUSE

Appendix 1 (context)

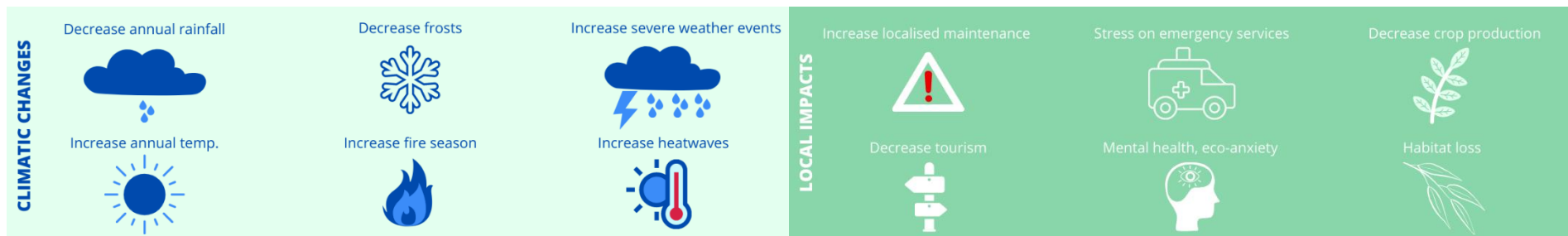


FIGURE 1: CLIMATIC CHANGES AND THE LIKELY LOCAL IMPACTS. SOURCE: DWELP, LODDON MALLEE REGIONAL CLIMATE CHANGE ADAPTATION SNAPSHOT.

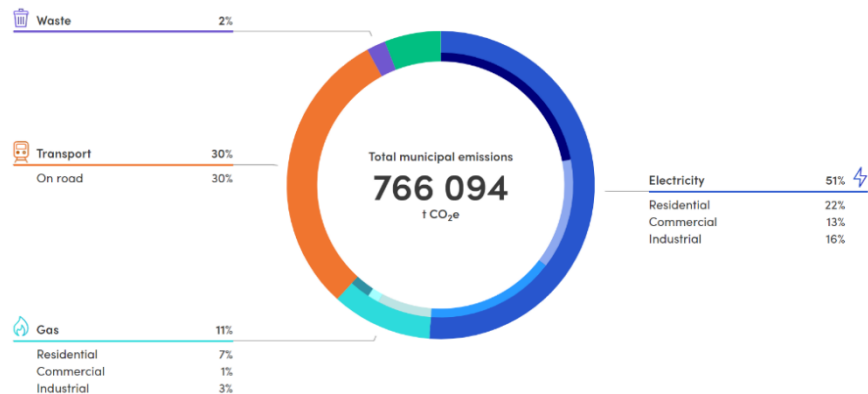


FIGURE 2: OUTLINE OF SHIRE-WIRE GREENHOUSE GAS EMISSIONS







The impact of climate change within the shire is likely to follow the patterns forecast for other parts of the Loddon Campaspe region and Victoria more broadly.

Within the shire, **species adapted to the cooler** temperatures of higher elevations are likely to be most vulnerable, such as Snow Gums and the wet forests of Mount Macedon.

Farmers within the shire will need to adapt to the drier conditions, Council operations will need to respond to **more frequent storm events**, fires and hot days which impact outdoor work, while the community more broadly will need to build resilience to more **heat waves and increased emergencies**.

Appendix 2 (future actions)

If you would like to become to 'lead' on any of the actions below and get the ball rolling, please contact Riddells Creek Neighbourhood House (Lisa Linton, manager@riddellscreeknh.com.au) or Macedon Ranges Shire Council (Justin Walsh, juwalsh@mrsc.vic.gov.au).

ACTION	CO-BENEFITS
EMERGENCY PLANNING PREPARATION WORKSHOPS: - BUSHFIRE - WATER SCARCITY - STORM RECOVERY - HEAT WAVE PREP	
"LESS LAWN" WORKSHOP/INFORMATION SESSIONS	
TOWNSHIP TREE PLANTING DAYS	
NEW COMMERCIAL DEVELOPMENT TO INCLUDE COMMUNITY GREEN SPACE.	
LOBBY FOR ENVIRONMENTALLY APPROPRIATE DEVELOPMENT	
COMMUNITY MUSIC EVENT (WITH SUSTAINABILITY FOCUS)	



ACTION

CO-BENEFITS

BEGIN A RIDDELLS CREEK ENVIRONMENTAL YOUTH GROUP



WELCOME PACKAGES FOR NEW COMMUNITY MEMBERS



INCREASE HEALTH OF WILDLIFE CORRIDORS



PROVIDE DOG PARK

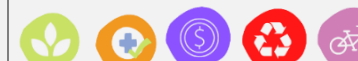


MORE COMMUNITY GARDENS

- EDIBLE STREET VERGES
- INCLUSIVELY DESIGN FOR AGED-CARE OR DISABILITY
- SCENERY GARDENS



PROMOTE LOCAL FOOD GROWING



CLIMATE FOCUSED COMMUNITY GROUPS



NEIGHBOURHOOD WATCH FOR THE ENVIRONMENT ('WILLING HELPERS' TO CALL FOR HELP)





ACTION

CO-BENEFITS

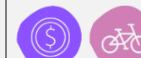
PROMOTE BUYING LOCAL & SELF-SUFFICIENCY



LOBBY FOR MORE ACTIVE TRANSPORT INFRASTRUCTURE
- WALKING PATHS (TO BE MORE OF POROUS MATERIALS)
- BICYCLE PATHS (IN RIDDELLS CREEK AND TO NEIGHBOURING TOWNS)
- SAFE HORSE RIDING TRAILS (IN RIDDELLS CREEK AND SURROUNDS)



ADVOCATE FOR ADDITION OF ELECTRIC VEHICLE INFRASTRUCTURE



INVESTIGATE AND ADVOCATE FOR ELECTIC BUS SERVICES



COMMUNITY COMPOST HUB



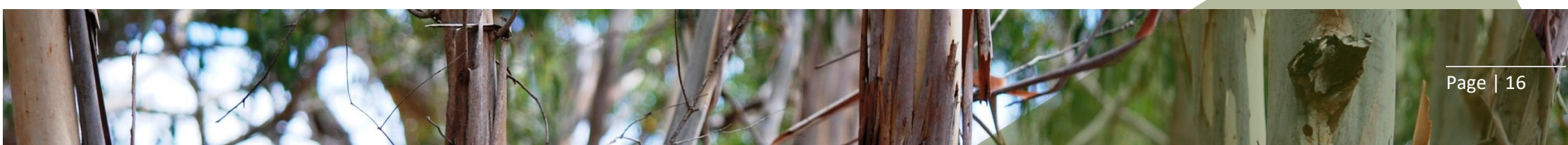
EXPAND NEIGHBOURHOOD HOUSE RECYCLING HUB



INVESTIGATE SMALL SCALE CIRCULAR ECONOMY SYSTEMS AND FEASIBILITY OF IMPLEMENTING IN RIDDELLS CREEK



CREATE AND PROMOTE A LOCAL REPAIR CAFE





ACTION

CO-BENEFIT

INVESTIGATE AND RUN FEASIBILITY STUDY OF COMMUNITY CLEAN ENERGY SYSTEMS
- BIOGAS HUB
- WIND



RESOURCE RECYCLING HUB



COMMUNITY-LED EDUCATION SESSIONS
- BEHAVIOUR CHANGE
- GETTING OFF GAS
- IMPROVE ENERGY USE



IN-SCHOOL EDUCATION



HOME ENERGY AUDITS



CREATE CO-ORDINATED BUSINESS NETWORK (RUN INFORMATION SESSIONS ON SUSTAINABLE TRANSITION OPPORTUNITIES)



ALL PUBLIC ASSETS TO INSTALL SOLAR





ACTION

CO-BENEFIT

ASSIST IN THE CREATION OF MORE LOCAL ORGANIC MARKET GARDENS



INCREASE SITE FOR OP SHOP (PROMOTE THE DONATION OF CLOTHING & HOME-WARES)



MOVIE NIGHTS FOR LOCAL BUSINESSES



LOBBY FOR INTERNET UPGRADE



LOCAL ENVIRONMENTAL KNOWLEDGE AUDIT



INVESTIGATE FEASIBILITY TO INCREASE CULTURAL AND ECOLOGICAL BURNS



RECOGNISE AND RESPOND TO EMERGING NEEDS (SMALLER BLOCKS = MORE SHARED PUBLIC GREEN SPACE)



PERSON TO PERSON WORKSHOPS FOR NEW RESIDENTS



PLANT OUT ALONG WATERWAYS





ACTION

CO-BENEFITS

“MEET THE CREEK” EDUCATIONAL WALK ‘N’ TALK



PROMOTE CURRENT WORKING ON CARBON SEQUESTRATION (HEALTHY LIVESTOCK, HEALTHY LANDSCAPE)



REDUCE USE OF FIREWOOD



LOBBY FOR STRONG AGRICULTURE REGULATION TO HOLD ONTO ENDANGERED ECOSYSTEMS

