

# BODKIN ST GOSPEL TRUST CHURCH HALL



CLIENT:  
BODKIN ST GOSPEL TRUST  
148 HIGH STREET  
KYNETON, VIC 3444

TITLE:  
COVERPAGE  
PROJECT:  
CHURCH HALL

DWG NO: A-1  
REVISION: 0  
SHEET No:  
DATE: 11-MAY-20  
SCALE:  
SHEET SIZE: A-3  
APPROVED:  
DRAWN: DB

**ICON  
INTERIORS**

icon interiors  
8A BOURKE STREET  
KYNETON VICTORIA 3444  
PO BOX 869  
KYNETON VICTORIA 3444  
PHONE 1300 764 151

(C) COPYRIGHT. This document is owned by, and the information contained in it is proprietary to Icon Interiors.

THE SITE  
148 HIGH STREET  
KYNETON, VIC 3444



CLIENT:  
BODKIN ST GOSPEL TRUST  
148 HIGH STREET  
KYNETON, VIC 3444

TITLE:  
SITE AERIAL VIEW  
PROJECT:  
CHURCH HALL

DWG NO: A-2  
REVISION: 0  
SHEET No:  
DATE: 11-MAY-20  
SCALE:  
SHEET SIZE: A-3  
APPROVED:  
DRAWN: DB

**ICON  
INTERIORS**

icon interiors  
8A BOURKE STREET  
KYNETON VICTORIA 3444  
PO BOX 869  
KYNETON VICTORIA 3444  
PHONE 1300 764 151



CLIENT:  
 BODKIN ST GOSPEL TRUST  
 148 HIGH STREET  
 KYNETON, VIC 3444

TITLE:  
 AERIAL VIEW WITH LOT PLAN

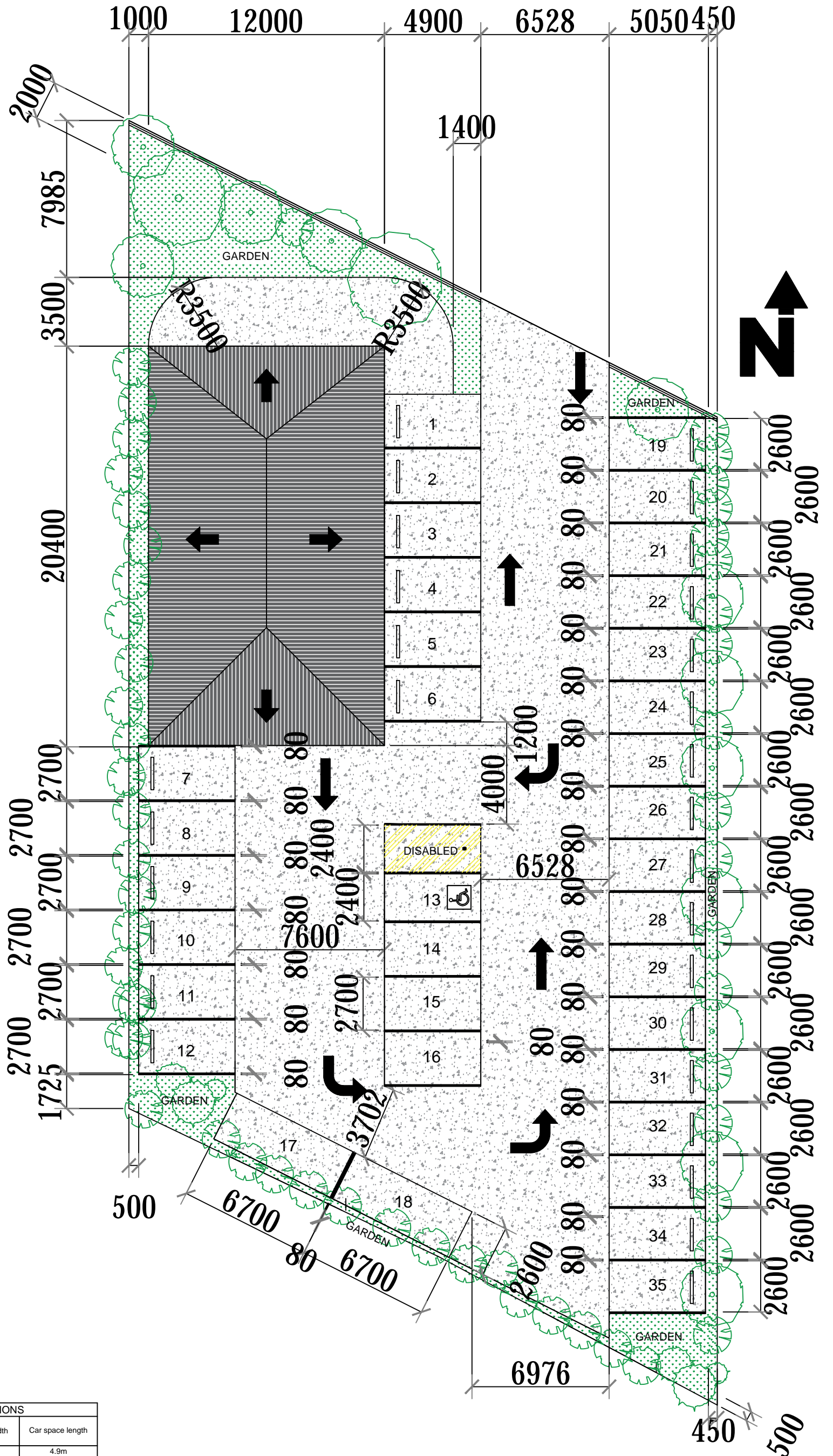
PROJECT:  
 CHURCH HALL

DWG NO: A-2B  
 REVISION:  
 SHEET No:  
 DATE: 11-MAY-20  
 SCALE: N T S  
 SHEET SIZE: A-3  
 APPROVED:  
 DRAWN: DB

**ICON INTERIORS**

icon interiors  
 8A BOURKE STREET  
 KYNETON VICTORIA 3444  
 PO BOX 869  
 KYNETON VICTORIA 3444  
 PHONE 1300 764 151

(C) COPYRIGHT. This document is owned by, and the information contained in it is proprietary to Icon Interiors.



VICTORIA PLANNING PROVISIONS			
Angle of car parking spaces to access way	Accessway width	Car space width	Car space length
90°	6.4m	2.6m	4.9m
	5.8m	2.8m	4.9m
	5.2m	3.0m	4.9m
	4.8m	3.2m	4.9m

CLIENT: BODKIN ST GOSPEL TRUST 148 HIGH STREET KYNETON, VIC 3444	TITLE: LOT PLAN	DWG NO: A-3 REVISION: SHEET No: DATE: 11-MAY-20 SCALE: 1:200 SHEET SIZE: A-3	<b>ICON INTERIORS</b> icon interiors 8A BOURKE STREET KYNETON VICTORIA 3444 PO BOX 869 KYNETON VICTORIA 3444 PHONE 1300 764 151
	PROJECT: CHURCH HALL	APPROVED: DRAWN: DB	

(C) COPYRIGHT. This document is owned by, and the information contained in it is proprietary to Icon Interiors.

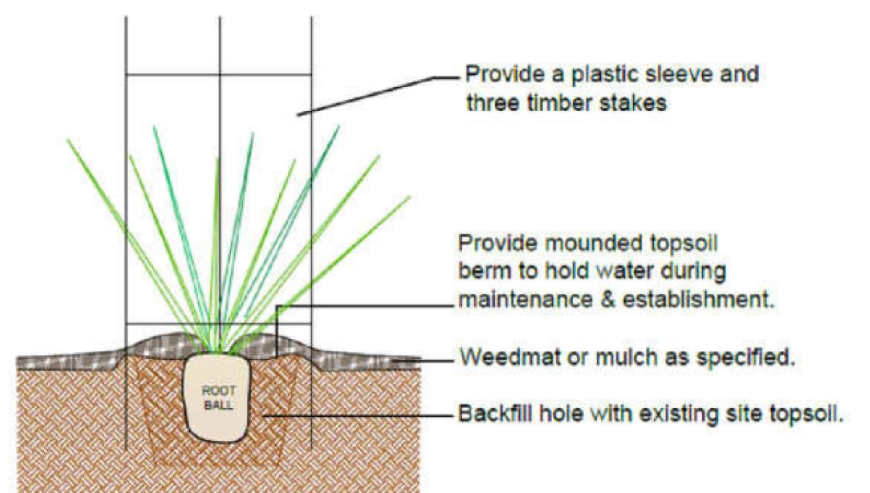
**GENERAL NOTES:**

- PLANTING TO BE UNDERTAKEN IN AUTUMN TO REDUCE THE NEED FOR WATERING. DURING THIS TIME, HAND WATER TO BE UNDERTAKEN WEEKLY FOR THE FIRST 8-13 WEEKS UNTIL THE PLANTS ARE ESTABLISHED. IF PLANTING IN WARMER MONTHS, MORE FREQUENT WATERING WILL BE REQUIRED. DRIPPER SYSTEMS TO BE INSTALLED TO PLANTS. PLANTING HOLES FOR SHRUBS AND GROUND COVERS ARE TO BE MINIMUM SIZE 75mm LARGER THAN THE PLANTING POT IN ALL DIRECTIONS. SEMI ADVANCED TREE PLANTING HOLES ARE TO BE THE SAME DEPTH AS THE ROOT BALL AND 2-3 TIMES ITS DIAMETER WITH THE TOP OF THE ROOT BALL BEING AT GRADE. A 75MM HIGH BERM IS TO BE CONSTRUCTED AT THE EDGE OF THE ROOT BALL TO HOLD WATER. ALL PLANTS ARE TO BE THOROUGHLY WATERED AFTER PLANTING AND SLOW RELEASE FERTILIZER ADDED AT QUANTITIES SPECIFIED BY MANUFACTURER.
- YEARLY MULCHING AND HAND WEEDING EVERY 3 MONTHS WILL HELP KEEP THE GARDEN BEDS NICE AND TIDY.
- USE SLOW RELEASE FERTILIZER IN LATE WINTER - EARLY SPRING.
- ALL TREES TO BE UNDEFORMED DISEASE-FREE SPECIMENS WITH SINGLE LEADER AND HEALTHY UN-POT BUND ROOT SYSTEM, FINAL LOCATIONS OF TREES TO BE SET OUT ON SITE AND APPROVED ON-SITE PRIOR TO INSTALLATION. TREE LOCATIONS ON THE PLAN ARE AS A GUIDE ONLY, AND WILL REQUIRE ADJUSTMENTS ON-SITE TO FIT IN WITH ABOVE AND BELOW GROUND FIXTURES AND SERVICES.
- LOCATION OF UNDERGROUND AND OVERHEAD SERVICES SHALL BE CHECKED AND CONFIRMED BY THE CONTRACTOR PRIOR TO ANY EXCAVATION.
- SOIL PREPARATION PRIOR TO PLANTING, ALL CRUSHED ROCK, CONCRETE, AND ANY OTHER MATERIALS RESTRICTIVE TO PLANT GROWTH SHALL BE REMOVED FROM THE SITE OF ANY PLANTING BEDS AND SEMI ADVANCED TREES. ALL TREES REMOVED SHALL BE STUMPED GROUND AND ALL RUBBISH/VEGETATIVE SPOIL IS TO BE REMOVED FROM SITE. EXISTING TOP SOIL IN PLANTING AREAS TO BE PRESERVED SO THAT IT DOES NOT RECEIVE ADDITIONAL COMPACTION FROM SITE MACHINERY OR RUBBLE FROM BUILDING SUPPLIES .
- PLANT ESTABLISHMENT PERIOD SHALL BE 13 WEEK PERIOD, FOLLOWING THE APPROVAL OF PRACTICAL COMPLETION BY THE RESPONSIBLE AUTHORITY. DURING THIS PERIOD, THE LANDSCAPING CONTRACTOR SHALL MAKE GOOD TO ALL DEFECTS IN HIS/ER SCOPE OF WORKS, MAINTENANCE AND ESTABLISHMENT MEANS THE CARE AND MAINTENANCE OF THE CONTRACTED AREA BY ACCEPTED HORTICULTURAL PRACTICES, AS WELL AS RECTIFYING ANY DEFECTS THAT BECOME APPARENT HORTICULTURAL PRACTICES, AS WELL RECTIFYING ANY DEFECTS THAT BECOME APPARENT IN THE WORK UNDER NORMAL USE. THIS SHALL INCLUDE BUT NOT LIMITED TO WATERING, FERTILIZING, WEEDING, PRUNING, PEST AND DISEASE CONTROL, CULTIVATION, RESTALKING AND REPLACEMENT OF ANY PLANTS THAT FAIL WITH PLANTS OF THE SAME SPECIES AND SIZE.

**MAINTENANCE SCHEDULE:**

- WATERING** ONCE PLANTS ARE ESTABLISHED (AFTER 13 WEEKS) WATERING BY AN APPROVED DRIPPER SYSTEM. DURING PERIODS OF EXTENDED WARM WEATHER, EXTRA WATERING MAY BE REQUIRED. THE SYSTEM IS TO BE CONNECTED TO TANKS AND MAINS WATER SUPPLIES TO MEET THE MANUFACTURER'S SPECIFICATIONS. THE SYSTEM IS TO HAVE INCLUDED A RAIN SHUT OFF DEVICE.
- MULCHING** YEARLY MULCHING OF MEDIUM GRADE COMPOSTED BARK MULCH CONTAINING 75MM COVERAGE ACROSS ENTIRE GARDEN BED OR PLANTING ZONE CONSISTING OF FINE DARK COLOURED CHIPPED OR SHREDDED FINE BARK OR SIMILAR WITH 80% OF PARTICLES IN THE SIZE RANGE OF 10 TO 20mm IN PLAN AND 5mm IN THICKNESS. NO PARTICLES ARE TO EXCEED 40mm IN PLAN. MULCH SHALL BE FREE OF DAMAGING MATTER SUCH AS SOIL, WEEDS, AND STICKS. AS MULCH IS TO BE SLOPED TOWARDS THE PLANT STEM AND KEPT BACK 100mm FROM THE STEMS OF ALL PLANTS TO PREVENT COLLAR ROT.
- TIMBER EDGING** PROVIDE 75mm x 25mm TREATED FINE EDGES TO ALL BOARDERS BETWEEN GARDENS AND PATHS FIXED WITH 75mm x20mm X 30mm LONE TREATED ONE STAKES AT 1200mm MAXIMUM CENTRES. AN ADDITIONAL STAKE IS TO BE PROVIDED AT JOINS TO THE PLINTH.
- WEEDING** HAND WEEDING EVERY 3 MONTHS WILL HELP THIS LANDSCAPE LOOKING ITS BEST
- FERTILIZER** APPLY ORGANIC NATIVE SLOW RELEASE FERTILIZER IN LATE WINTER TO EARLY SPRING FOR THE FIRST 2 YEARS.
- TREE CANOPY** LOWER BRANCHES OF TREES TO BE UNDERCUT TO PROVIDE A 1M CLEARANCE
- TREE STAKES/TIES** TO BE CHECKED IN EARLY SPRING, ANY LOOSE TIES TO BE RE-SECURED, REMOVED STAKES AFTER 2 YEARS OR WHEN THE TREES HAVE DEVELOPED A STRONG ROOT SYSTEM

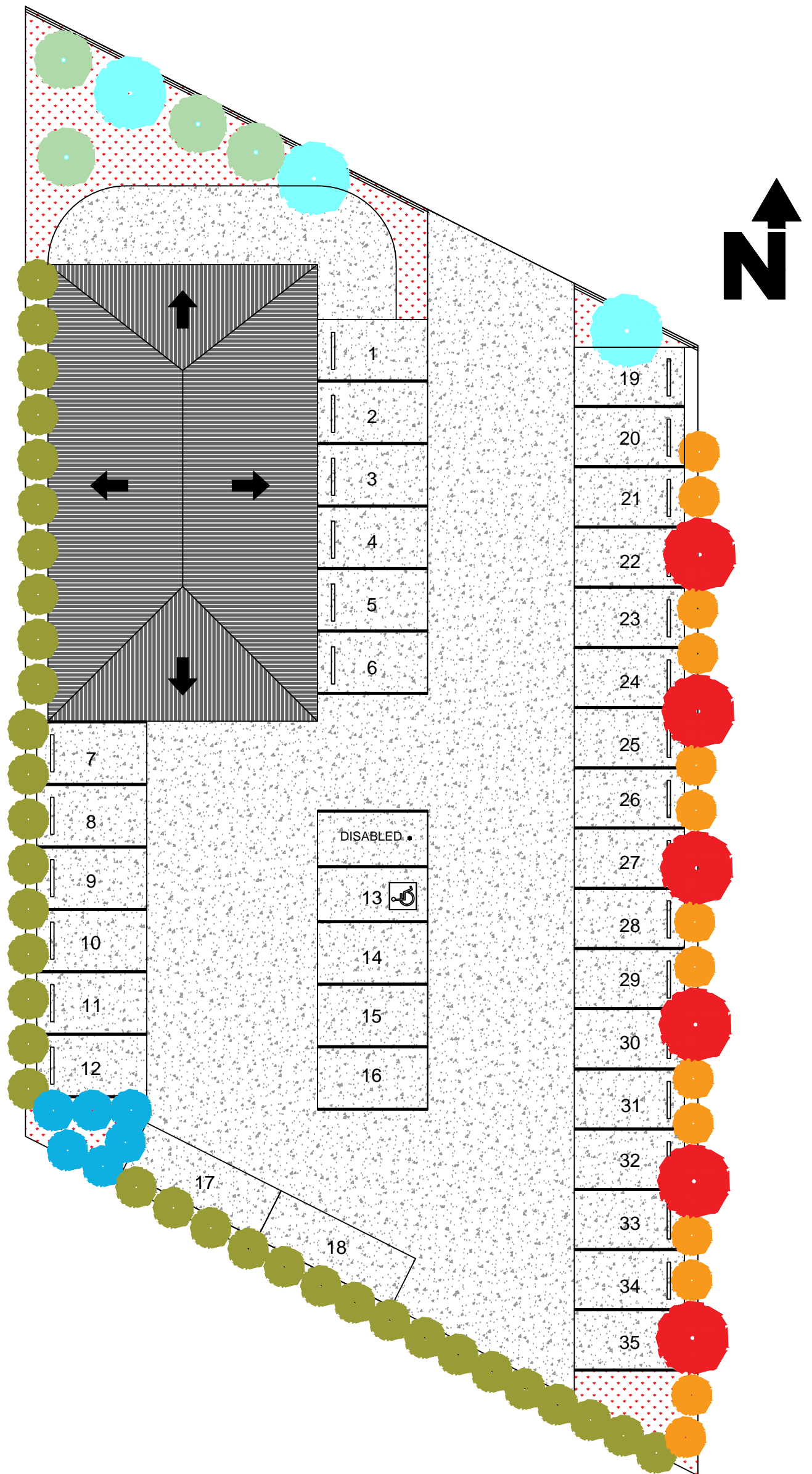
MAINTENANCE TASK	J	F	M	A	M	J	J	A	S	O	N	D
<b>CARE OF PLANTS</b>												
MONITORING	Y	Y	Y	Y	Y	Y	Y	Y	Y	Y	Y	Y
PRUNING (IF NEEDED)	Y	Y	Y	Y	Y				Y	Y	Y	Y
DEADHEADING / TIP PRUNING	Y	Y	Y	Y	Y				Y	Y	Y	Y
FERTILISE - SLOW RELEASE									Y			
FERTILISE - RAPID SOLUBLE AS NEEDED	Y	Y	Y	Y					Y	Y	Y	Y
CUT BACK PERENNIALS AND GRASSES			Y	Y								Y
WATERING (AS NEEDED)	Y	Y	Y	Y						Y	Y	Y
<b>GRASS BEDS</b>												
EDGING	Y	Y	Y	Y						Y	Y	Y
WEEDING	Y	Y	Y			Y				Y	Y	Y
MULCHING	Y								Y			
LEAF REMOVAL				Y								
<b>PEST MANAGEMENT</b>												
MONITORING	Y	Y	Y	Y	Y				Y	Y	Y	Y
<b>LAWNS</b>												
FERTILISE									Y			Y
SEEDING WHEN NEEDED										Y		
WINTER CLEAN UP							Y					



**NOTE:**  
 Place plants in position according to densities required and prepare planting holes, with as minimal soil disturbance as possible, to a minimum size of 150mm deep x 200mm in diameter. Plants shall be thoroughly soaked via immersion in water prior to planting. If the site soil is very dry then planting holes are also to be filled with water and allowed to drain completely.  
 Place plant in hole so that top of soil level in pot matches surrounding soil level. Back fill with existing site topsoil, removing any debris limiting to plant growth. Provide weed matting or mulch area as specified taking care to keep mulch clear of plant stem. All plants are to be thoroughly watered after planting.

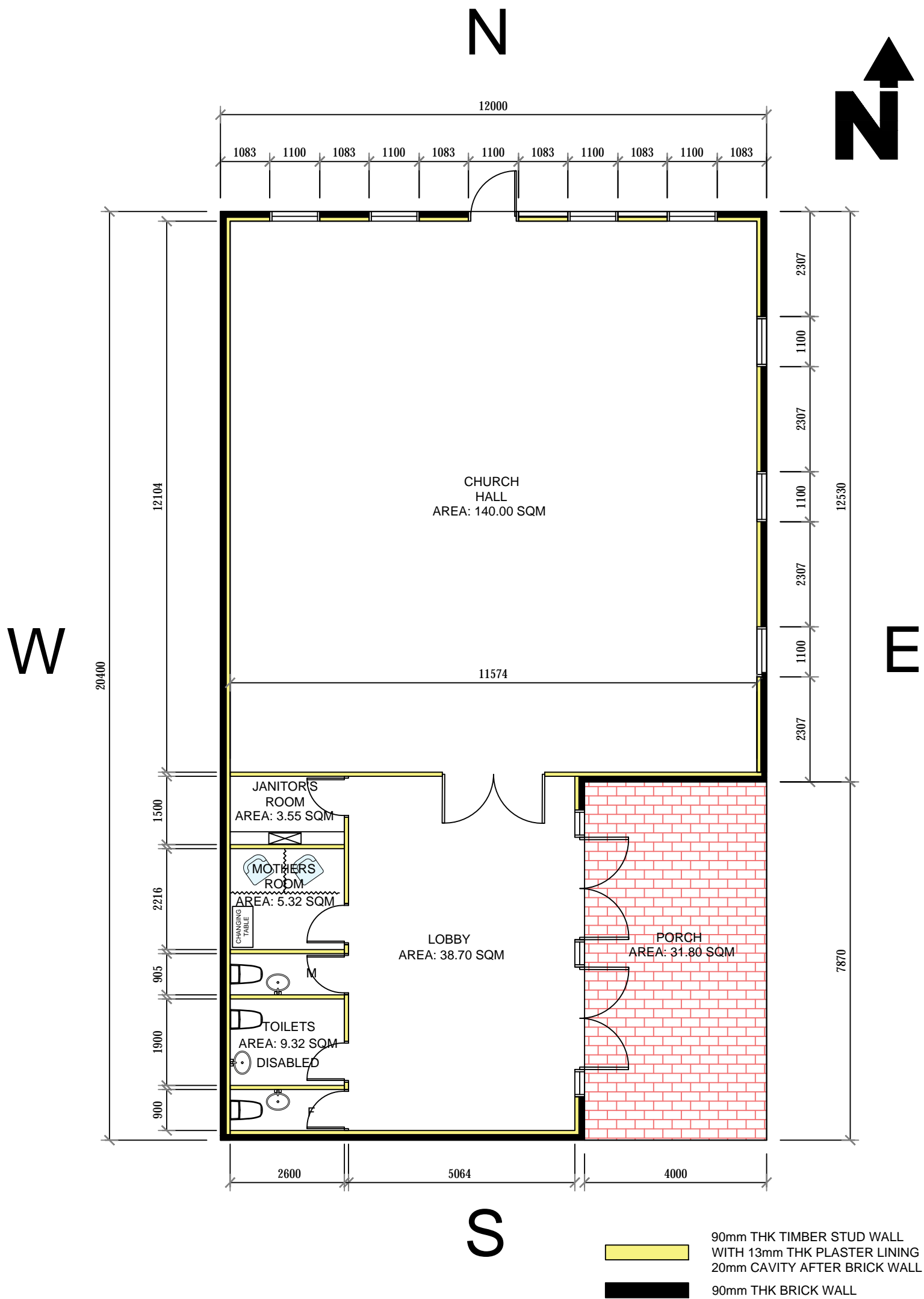
CLIENT: BODKIN ST GOSPEL TRUST 148 HIGH STREET KYNETON, VIC 3444	TITLE: PLANT PAGE	DWG NO: A-3A REVISION: SHEET No:	<b>ICON INTERIORS</b> icon interiors 8A BOURKE STREET KYNETON VICTORIA 3444 PO BOX 869 KYNETON VICTORIA 3444 PHONE 1300 764 151
	PROJECT: CHURCH HALL	DATE: 11-MAY-20 SCALE: 1:200 SHEET SIZE: A-3 APPROVED:	
(C) COPYRIGHT. This document is owned by, and the information contained in it is proprietary to Icon Interiors.		DRAWN: DB	

-  LIPSTICK MAPLE  
(OCTOBER GLORY)
-  CLEAVELAND  
ORNAMENTAL PEAR  
(PYRUS CALLERYANA)
-  POA ESKDALE  
1M X 1M SPACINGS
-  PHOTINIA REDROBIN  
(PHOHINA X FRASERI)
-  BUXUS 'ENGLISH BOX'  
(BUXUS SEMPERVIRENS)
-  ELAEAGNUS X EBBINGEI
-  SNOW PEAR  
(PYRUS NIVALIS)
-  PARKING AREA  
CONCRETE SURFACE



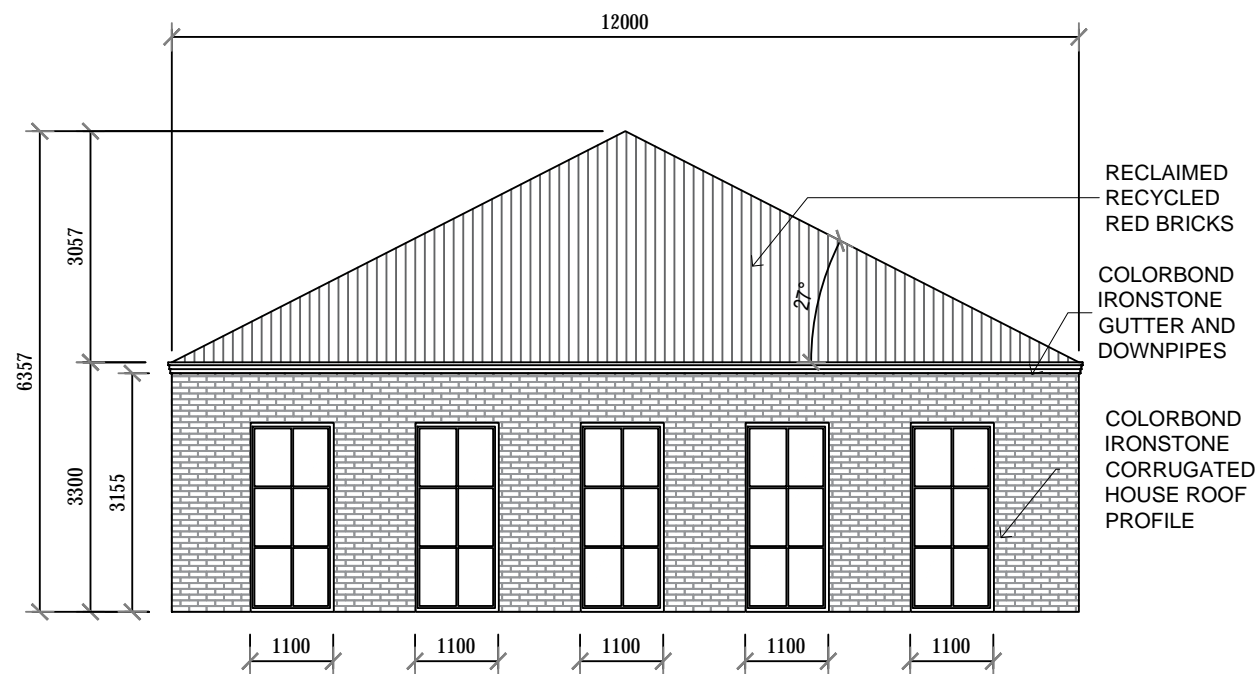
CLIENT: BODKIN ST GOSPEL TRUST 148 HIGH STREET KYNETON, VIC 3444	TITLE: LANDSCAPING PLAN	DWG NO: A-3B REVISION: SHEET No: DATE: 11-MAY-20 SCALE: 1:200 SHEET SIZE: A-3	<b>ICON INTERIORS</b> icon interiors 8A BOURKE STREET KYNETON VICTORIA 3444 PO BOX 869 KYNETON VICTORIA 3444 PHONE 1300 764 151
	PROJECT: CHURCH HALL	APPROVED: DRAWN: DB	

(C) COPYRIGHT. This document is owned by, and the information contained in it is proprietary to Icon Interiors.

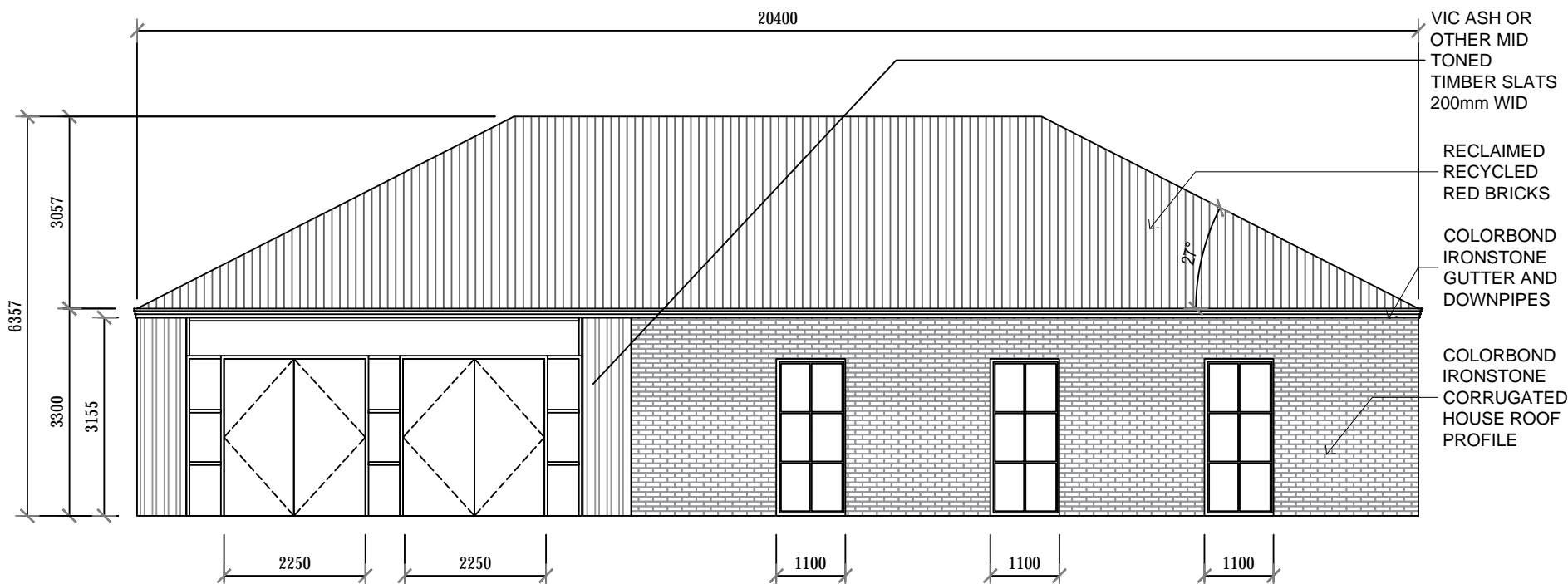


TOTAL FLOOR AREA  
244.80 SQM

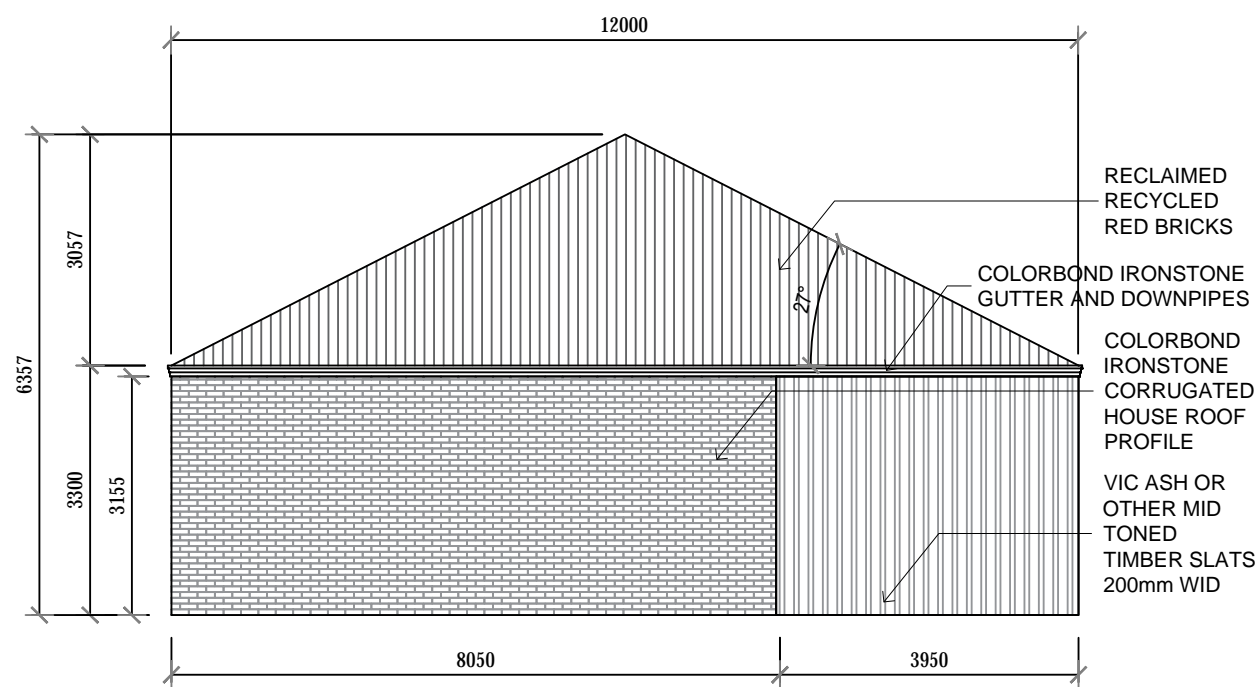
CLIENT: BODKIN ST GOSPEL TRUST 148 HIGH STREET KYNETON, VIC 3444	TITLE: <b>FLOOR PLAN</b>	DWG NO: A-4 REVISION: 0 SHEET No:	<b>ICON INTERIORS</b> icon interiors 8A BOURKE STREET KYNETON VICTORIA 3444 PO BOX 869 KYNETON VICTORIA 3444 PHONE 1300 764 151
	PROJECT: <b>CHURCH HALL</b>	DATE: 11-MAY-21 SCALE: 1:100 SHEET SIZE: A-3 APPROVED:	
<small>(C) COPYRIGHT. This document is owned by, and the information contained in it is proprietary to Icon Interiors.</small>		DRAWN: DB	<small>IC-50</small>



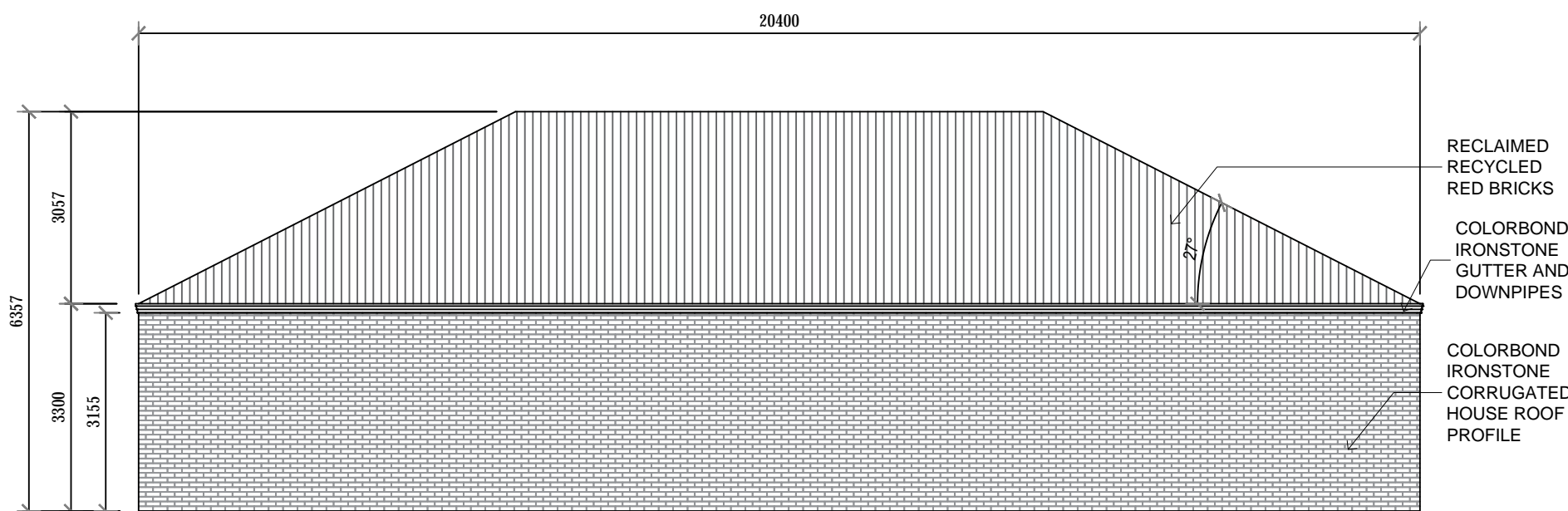
**NORTH ELEVATION**



**EAST ELEVATION**



**SOUTH ELEVATION**



**WEST ELEVATION**

CLIENT:  
 BODKIN ST GOSPEL TRUST  
 148 HIGH STREET  
 KYNETON, VIC 3444

TITLE:  
 ELEVATIONS

PROJECT:  
 CHURCH HALL

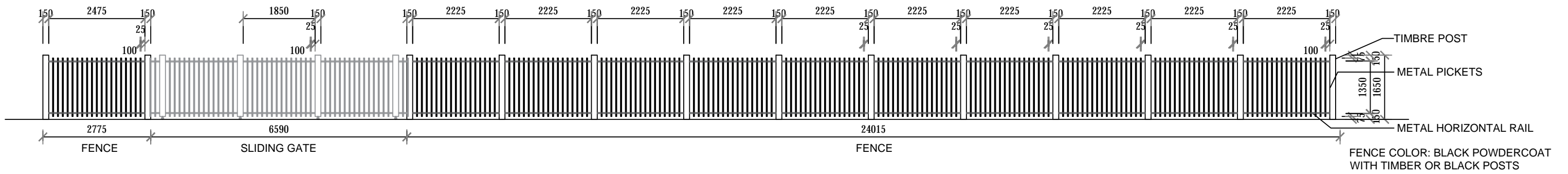
DWG NO: A-5  
 REVISION:  
 SHEET No:  
 DATE: 11-MAY-20  
 SCALE: 1:50  
 SHEET SIZE: A-3  
 APPROVED:  
 DRAWN: DB

**ICON  
 INTERIORS**

icon interiors  
 8A BOURKE STREET  
 KYNETON VICTORIA 3444  
 PO BOX 869  
 KYNETON VICTORIA 3444  
 PHONE 1300 764 151

(C) COPYRIGHT. This document is owned by, and the information contained in it is proprietary to Icon Interiors.





<p>CLIENT:</p> <p>BODKIN ST GOSPEL TRUST</p> <p>148 HIGH STREET</p> <p>KYNETON, VIC 3444</p>	<p>TITLE:</p> <p>FENCE ELEVATION</p>	<p>DWG NO: A-6</p> <p>REVISION:</p> <p>SHEET No:</p> <p>DATE: 11-MAY-20</p> <p>SCALE: 1:50</p> <p>SHEET SIZE: A-3</p>	<p><b>ICON INTERIORS</b></p>	<p>icon interiors</p> <p>8A BOURKE STREET</p> <p>KYNETON VICTORIA 3444</p> <p>PO BOX 869</p> <p>KYNETON VICTORIA 3444</p> <p>PHONE 1300 764 151</p>
	<p>PROJECT:</p> <p>CHURCH HALL</p>	<p>APPROVED:</p> <p>DRAWN: DB</p>		

(C) COPYRIGHT. This document is owned by, and the information contained in it is proprietary to Icon Interiors.



CLIENT:  
 BODKIN ST GOSPEL TRUST  
 148 HIGH STREET  
 KYNETON, VIC 3444

TITLE:  
 3D VIEW - STREET VIEW

---

PROJECT:  
 CHURCH HALL

DWG NO: A-7  
 REVISION:  
 SHEET No:  
 DATE: 11-MAY-20  
 SCALE:  
 SHEET SIZE: A-3  
 APPROVED:  
 DRAWN: DB

**ICON  
 INTERIORS**

icon interiors  
 8A BOURKE STREET  
 KYNETON VICTORIA 3444  
 PO BOX 869  
 KYNETON VICTORIA 3444  
 PHONE 1300 764 151

(C) COPYRIGHT. This document is owned by, and the information contained in it is proprietary to Icon Interiors.



<p>CLIENT: BODKIN ST GOSPEL TRUST 148 HIGH STREET KYNETON, VIC 3444</p>	<p>TITLE: 3D VIEW - FRONT VIEW</p> <hr/> <p>PROJECT: CHURCH HALL</p>	<p>DWG NO: A-8 REVISION: SHEET No: DATE: 11-MAY-20 SCALE: SHEET SIZE: A-3 APPROVED: DRAWN: DB</p>	<p><b>ICON INTERIORS</b></p>	<p>icon interiors 8A BOURKE STREET KYNETON VICTORIA 3444 PO BOX 869 KYNETON VICTORIA 3444 PHONE 1300 764 151</p>
---	--	---	----------------------------------	--

(C) COPYRIGHT. This document is owned by, and the information contained in it is proprietary to Icon Interiors.



CLIENT:  
 BODKIN ST GOSPEL TRUST  
 148 HIGH STREET  
 KYNETON, VIC 3444

TITLE:  
 3D VIEW - FRONT VIEW, LEFT SIDE

PROJECT:  
 CHURCH HALL

DWG NO: A-9  
 REVISION:  
 SHEET No:  
 DATE: 11-MAY-20  
 SCALE:  
 SHEET SIZE: A-3  
 APPROVED:  
 DRAWN: DB

**ICON  
 INTERIORS**

icon interiors  
 8A BOURKE STREET  
 KYNETON VICTORIA 3444  
 PO BOX 869  
 KYNETON VICTORIA 3444  
 PHONE 1300 764 151

(C) COPYRIGHT. This document is owned by, and the information contained in it is proprietary to Icon Interiors.



CLIENT:  
 BODKIN ST GOSPEL TRUST  
 148 HIGH STREET  
 KYNETON, VIC 3444

TITLE:  
 3D VIEW - REAR VIEW FROM PARKING LOT

PROJECT:  
 CHURCH HALL

DWG NO: A-10  
 REVISION:  
 SHEET No:  
 DATE: 11-MAY-20  
 SCALE:  
 SHEET SIZE: A-3  
 APPROVED:  
 DRAWN: DB

**ICON  
 INTERIORS**

icon interiors  
 8A BOURKE STREET  
 KYNETON VICTORIA 3444  
 PO BOX 869  
 KYNETON VICTORIA 3444  
 PHONE 1300 764 151

(C) COPYRIGHT. This document is owned by, and the information contained in it is proprietary to Icon Interiors.



CLIENT:  
 BODKIN ST GOSPEL TRUST  
 148 HIGH STREET  
 KYNETON, VIC 3444

TITLE:  
 3D VIEW - REAR VIEW, LEFT SIDE

PROJECT:  
 CHURCH HALL

DWG NO: A-11  
 REVISION:  
 SHEET No:  
 DATE: 11-MAY-20  
 SCALE:  
 SHEET SIZE: A-3  
 APPROVED:  
 DRAWN: DB

**ICON  
 INTERIORS**

icon interiors  
 8A BOURKE STREET  
 KYNETON VICTORIA 3444  
 PO BOX 869  
 KYNETON VICTORIA 3444  
 PHONE 1300 764 151

(C) COPYRIGHT. This document is owned by, and the information contained in it is proprietary to Icon Interiors.